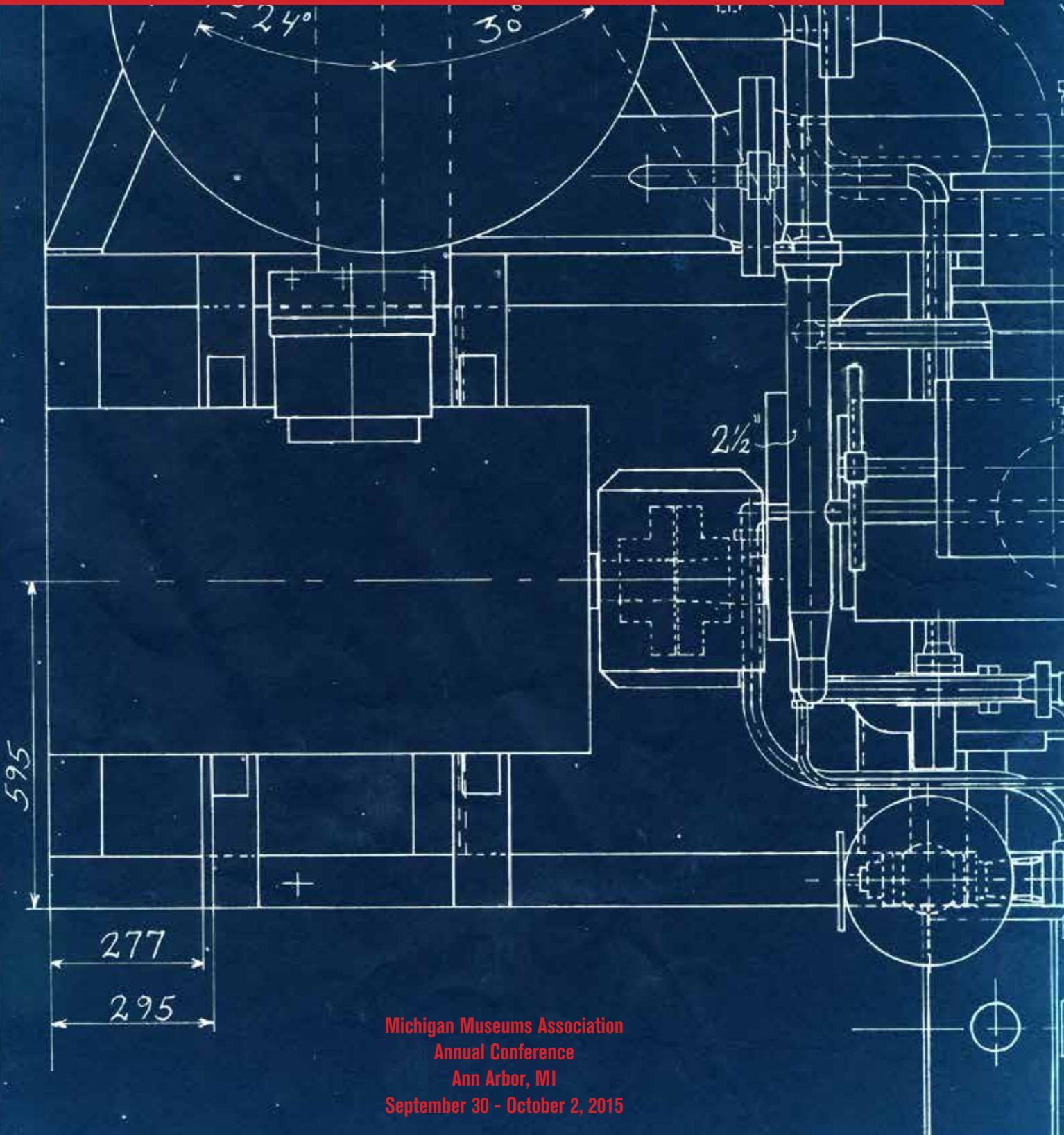


MICHIGAN MUSEUMS

PLANNING FOR

CHANGE

2025



Michigan Museums Association
Annual Conference
Ann Arbor, MI
September 30 - October 2, 2015

GRAND RAPIDS ART MUSEUM

Photo: Steve Hall © Hedrich Blessing

Live Artfully

MUSEUM HOURS

TUESDAY & WEDNESDAY: 10 am - 5 pm
THURSDAY: 10 am - 9 pm

FRIDAY & SATURDAY: 10 am - 5 pm
SUNDAY: 12 noon - 5 pm
MONDAY: closed

GRAM

616.831.1000 • artmuseumgr.org

Welcome

Hello and Welcome to Ann Arbor!

We're delighted to have you with us at this year's 2015 Michigan Museums Association Annual Conference in the Ann Arbor. We've been planning for this occasion since our last gathering on Mackinac Island and think that we've organized a compelling program designed to appeal to a broad cross section of our membership.

We're especially eager for you to hear our keynote speaker, Dr. Tonya Matthews of the Michigan Science Center, a gifted scientist with a passion for museums. And as the University of Michigan approaches its bicentennial in 2017, we also think that our keynote address on the history of the university's many museums will be a talk you won't want to miss.

We're excited to be able to offer tours of 10 different campus museums, archives, and libraries on Thursday afternoon. Whether your tastes run to archaeology, fine art, natural science, presidential libraries, historical archives, or arboreta, we've got a tour for you. Evenings are open to allow you to jump on the pub crawl or enjoy Ann Arbor's many attractions on your own—the student oriented State St. area, upscale Main St., and, of course, Zingerman's and the other shops at Kerrytown.

All signs point to this year's 2015 conference as being one of endless possibilities. Thanks for joining us in Ann Arbor. We're happy to have you here.

Carla Sinopoli
Brad Taylor
Museum Studies Program
University of Michigan

Dear Fellow MMA Members and Guests:

Welcome to the 2015 Michigan Museums Association Annual Conference.

CHANGE is a word that tends to get a bad "rap." It usually means that something we have come to rely upon as the "normal" is going to be modified, altered or displaced, (as Webster's describes) "often amounting to a loss of original identity or a substitution of one thing for another." Many find that uncertainty downright unnerving; however, change does inevitably happen and many times that change can leave the unprepared in the proverbial "dust."

Many changes in our chosen profession have become standard practice. Technology has revolutionized our access to information and each other, where "Email me," "text me," and "Facebook me" are now the standard workplace lexicon, a dramatic change from the phone call and "snail mail" postal letter. Computer programs like "PastPerfect" have transformed collections inventorying, and in the process opened new avenues for the public to access the wonderful and astounding artifacts we hold in public trust, through conventions like virtual exhibits and collaboration tools. Changes like these have really pushed museums and archives to become an integrated part of the cultural, educational and recreational landscape much more than they ever have been in the history of the museum field.

While change is inevitable, we as museum professionals have the choice to let it push us down the road and ultimately stand the chance of being run over by its progress, or get out in front by planning for it and embracing the potential that change represents. We owe a big "thank you" to this year's conference planners for pulling together an excellent conference with a slate of sessions and speakers based around this concept of Planning for Change. Our hope is that you will find something that resonates with you, and that your time spent among your peers during the social and networking opportunities will be both advantageous and rewarding.

In closing, as the out-going President of MMA, I would like to thank the many fellow members who have supported the work of MMA, and I sincerely hope that you will continue to support the organization's efforts into the future. I would also ask that you consider every opportunity to become more involved with this wonderful organization that has supported our profession and museum community for over sixty years.

Sincerely,

Ron Bloomfield
President



Join the conversation.

Sponsors

Presenting Sponsors

Michigan Council for Arts and Cultural Affairs
University of Michigan Museum Studies Program

Partner

Grand Valley State University Art Gallery
Eastern Michigan University Historic Preservation Program
UHY, LLP

General Sponsor

Michigan Historical Center

Thursday, October 1

Newcomer's Coffee
Detroit Institute of Arts

Keynote
University of Michigan Museum
Studies Program

Morning Break
Historic Ford Estates

Awards Lunch
The Henry Ford

Pub Crawl
Ann Arbor Convention
and Visitors Bureau

Friday, October 2

Student Coffee
University of Michigan Libraries

Morning Break
Boxcar Studios

Business Meeting Lunch
Timothy J. Chester

Plenary Presentation
Mackinac State Historic Parks

Afternoon Cookie Break
American Museum of Magic

Museum Café
The Kane Group, Inc.

Throughout the Conference

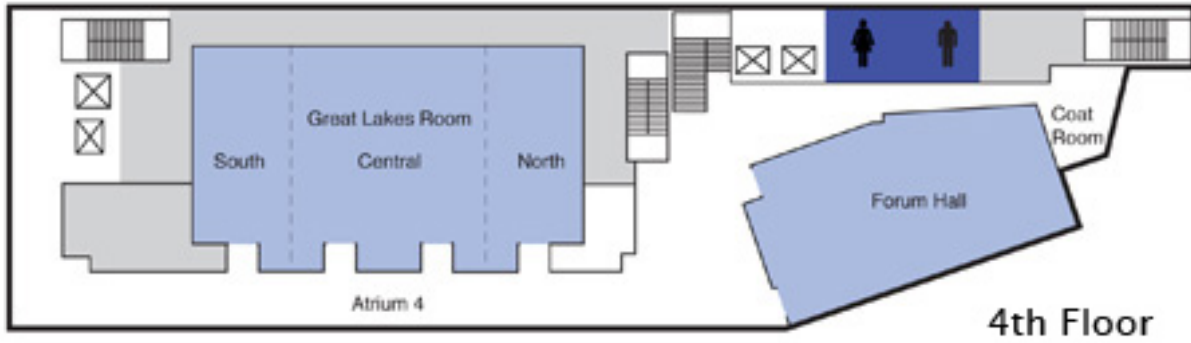
Tote Bags
Quinn Evans Architects

Media Charging Station
Musynergy

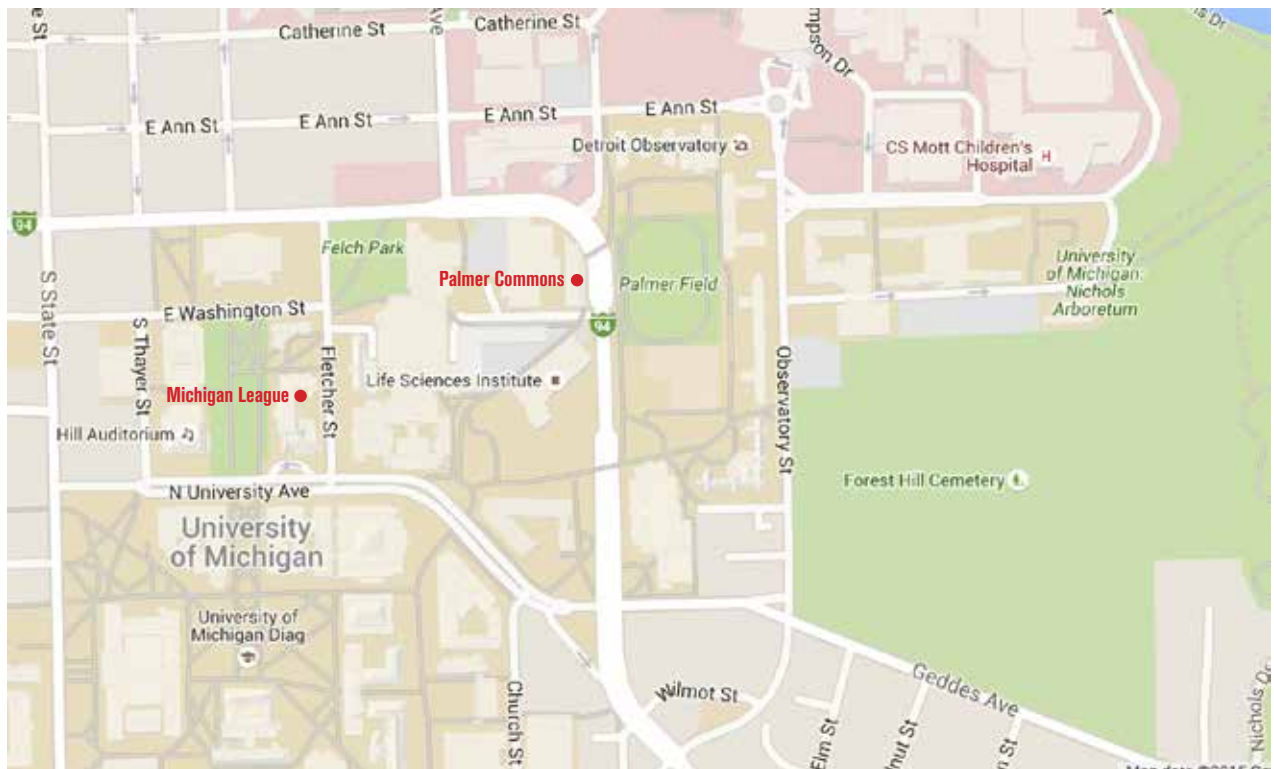


Maps

Palmer Commons



University of Michigan Campus



Conference Central

The Palmer Commons 4th Floor Atrium is the place to go for all your conference needs!

Registration Desk

Stop by to pick up your nametag and tote bag. Need a map, information about the schedule, a secure place to charge your device, or pretty much anything in general? The registration desk is the place to visit.

Thursday, October 1
8 am to 3:30 pm

Friday, October 2
8:30 am to 4:30 pm

Tote Bags Sponsored by Quinn Evans Architects
Charging Station Sponsored by Musynergy

Thursday Exhibitors

Museum Vendors

Thursday, October 1
8:30 am to 3:00 pm

Meet with businesses that provide products and services for museums.

- Corporate Color
- Gene Ullery-Smith Graphic Design
- Good Design Group, LLC
- Paragon Design + Display
- Reagan Marketing & Design
- Tyler Supply Company
- UHY LLP

Friday Exhibitors

Conversation Station

Friday, October 2
9:00 am to 12:30 pm

Visit with a Michigan cultural organization looking for input from Michigan museums.

- The Great Lakes Fisheries Heritage

Local Museum Showcase

Friday, October 2
9:00 am to 12:30 pm

Museums and cultural organizations from the Ann Arbor area will highlight their offerings and share information about their institutions through displays that have been created especially for this conference.

- African American Cultural and Historical Museum of Washtenaw County
- Apple Heritage Museum of Huron Valley
- Argus Museum
- Banner Moments traveling exhibit
- Cobblestone Farm
- The Dinnerware Museum
- Museum on Main Street
- Saline Area Historical Society
- Ypsilanti Historical Society



Conference at a Glance

**Wednesday,
September 30**

6:00 – 7:30 pm

Opening Reception
Registration

Ann Arbor Hands-On Museum

**Thursday,
October 1**

8:30 am – 3:00 pm

Registration opens
Vendors on display

Atrium

8:30-9:00 am

Newcomers Coffee

Atrium

9:00 – 10:30 am

Opening Session and Keynote

Great Lakes

10:30 – 11:00 am

Break

Atrium

11:00 am – 12:00 pm

Concurrent Sessions

The Case of the Jim Crow Museum
Embracing the E-Revolution
Building a New Audience
Small Collections Network

Forum
Great Lakes North
Great Lakes Central
Great Lakes South

12:15 – 1:45 pm

Lunch and Awards

Michigan League Ballroom

2:00 – 3:00 pm

Concurrent Sessions

Visitor Accessibility Plan
Inextinguishable-with Detroit Artist Tyree Guyton
Training the Next Generation of Museum Professionals
NAGPRA Basics

Forum
Great Lakes North
Great Lakes Central
Great Lakes South

3:00 – 5:00 pm

Tours

Leaving from Palmer Commons

5:30 – 7:00 pm

Evening Reception

University of Michigan Museum of Art

Dinner on your own

8:00 pm

Pub Crawl

Starting Location: Ashley's

**Friday,
October 2**

9:00 am – 4:45 pm

Registration opens

Atrium

9:00 am – 12:30 pm

Conversation Station

Atrium

9:00-10:00 am

Local Museum Showcase
Student Coffee

Atrium

9:30 -10:30 am

Concurrent Sessions

Bring Docents into the 21st Century
Student Papers I
Deseigning and Building High-Impact Exhibits
Rethinking the Museum on the Streets of Detroit

Forum
Great Lakes North
Great Lakes Central
Great Lakes South

10:30 – 11:00 am

Break

Atrium

11:00 am – 12:00 pm

Concurrent Sessions

Changing your Practice Through Regular Evaluation
Student Papers II
Building Relationships Outside Your Museum
Visual Integration

Plaza
Great Lakes North
Great Lakes Central
Great Lakes South

12:15 -1:45 pm

Lunch and MMA Business Meeting

Michigan League Ballroom

2:00 – 3:00 pm

Plenary Presentation

Forum

3:00 – 3:30 pm

Break (by Zingerman's)

Atrium

3:30 – 4:30 pm

Museum Café

Great Lakes Central

4:45 – 6:00 pm

Evening Reception

U of Michigan Museum of Natural History

Events and Tours

Receptions

There are three receptions throughout the conference and all are included in the conference registration. Transportation is not provided to the reception venues.

Ann Arbor Hands-On Museum
Wednesday September 30 6:00-7:30

University of Michigan Museum of Art
Thursday, October 1 5:30-7:00

University of Michigan Museum of Natural History
Saturday, October 2 4:45-6:00

Lunches

Lunch on both days will be held in the Michigan League Ballroom, a short walk from Palmer Commons. Lunch on Thursday will include the presentation of awards to several of Michigan's leaders in the museum community. Lunch on Friday will include the annual business meeting for the Michigan Museums Association.

Tours

All tours will take place on Thursday, October 1 beginning at 3:00. Tours are included in the conference registration. Transportation to each tour venue varies, and all involve some walking. Sign up at the registration table, if you haven't already.

Ann Arbor Hands-On Museum
Bentley Historical Library
Gerald R. Ford Presidential Library
Kelsey Museum
Museum of Anthropological Archaeology
Nichols Arboretum of the University of Michigan
Sindecuse Museum of Dentistry
University of Michigan 3D Lab
University of Michigan Museum of Art
University of Michigan Museum of Natural History

The annual meeting of the Michigan Museums Association will take place during lunch. The meeting will include reports on the status of the organization as well as renewing members of the Board of Directors. The location for the 2016 conference will also be announced at this time.

MICHIGAN MUSEUMS ASSOCIATION

2015 Annual Business Meeting
Friday, October 2, 2015, 12:30 p.m.
University of Michigan, Ann Arbor

AGENDA

CALL TO ORDER

APPROVAL OF 2014 MINUTES

REPORTS

President
Treasurer
VP for Membership
VP for Programs
Strategic Framework
Director

ELECTIONS

Report of the Nominating Committee
Appreciation to Outgoing Board Member

INVITATION TO 2016 ANNUAL MEETING

September 14-17, Detroit

ADJOURN



Join the conversation.

Detailed Schedule and Session Descriptions

WEDNESDAY, SEPTEMBER 30

Pre-Conference Workshop

Permission to Wonder: The Visual Thinking Strategies

1:00-5:00

University of Michigan Museum of Art

Sue Troia, Manager of Gallery Teaching and Senior Trainer,
Visual Thinking Strategies, Detroit Institute of Arts

This half-day basic training will introduce you to the Visual Thinking Strategies (VTS). VTS is a learner-centered, research-based teaching method that has been proven to improve critical thinking, assist with language development, and engage problem-solving skills. You will learn how the VTS can be used for exploring works of art, historical objects, written texts and documents. You will have the opportunity to practice the skills you have learned in front of a work of art or historical object and receive coaching and feedback to strengthen your practice and understanding of VTS. DIA staff will then lead a reflective group discussion that will help everyone understand how VTS can be used in a variety of disciplines.

Opening Reception and Registration

6:00 – 7:30 pm

Ann Arbor Hands-On Museum

The conference kicks off with a gathering in the heart of the city at the Ann Arbor Hands-On Museum, one of Michigan's largest interactive children's museum. We have the whole museum to ourselves—playing in water tables, scaling a climbing wall, and much more! Pick up your nametag and registration materials here as well.

Sponsored by Nancy Bryk

THURSDAY, OCTOBER 1

Registration Open and Vendors on Display

8:30 am – 3:00 pm

Palmer Commons Atrium

Pick up your nametag and registration materials, securely charge your mobile device and visit with businesses offering services to museums and cultural organizations.

*Totebags sponsored by Quinn Evans Architects
Charging Station sponsored by Musynergy*

Newcomers Coffee

8:30-9:00 am

Palmer Commons Atrium

First time at an MMA conference? Come early for coffee and a chance to ask questions and meet MMA regulars. MMA Conference veteran? Come early for coffee and help welcome colleagues new to the experience.

Sponsored by the Detroit Institute of Arts

KEYNOTE

If We Must Change: Moving Museums from Objects of Change to Agents of Change

9:00 – 10:30 am

Palmer Commons Forum

Dr. Tonya Matthews, CEO and Executive Director,
Michigan Science Center

Indeed the world is changing, but Museums are as much a part of that changing world as the audiences we serve. As institutions of historic preservation and curiosity cultivation, museums excel at creating the lenses through which people can view, share, and explore their environments, history and culture. Are we being called to do more? Should museums be engaged in motivating the conversations, rather than just curating them? Are we being called to do less? Should museums defer to the "selfie" and let visitors chart their own courses, interpretations and interactions with our resources?

Dr. Matthews will explore the fascinating balancing act museums are engaged in now and encourage thought-provoking questions about what this means for us in the future: Are we to be the changed or the changers?

A thought-leader in museum engagement and open-classroom, hands-on STEM (science, technology, engineering and math) education, Dr. Tonya M. Matthews serves as the Michigan Science Center's president and chief executive officer. Her diverse background includes academic and professional work as a Ph.D. scientist, educator, community volunteer and award-winning writer/poet.

Prior to the Michigan Science Center, Matthews served as the Vice President of Museums for Cincinnati Museum Center, directing the education, research and community engagement footprints of a 3-museum, 3-research center, multi-site institution. During her tenure, she was instrumental in positioning the museum as a thought leader in STEM and created the museum's signature programs in early childhood science training and girl-focused STEM engagement.

*Sponsored by the University of Michigan
Museum Studies Program*

Break

10:30 – 11:00 am

Palmer Commons Atrium

Sponsored by Historic Ford Estates

Concurrent Sessions

11:00 am – 12:00 pm

Using Museums to Create a More Inclusive Society: The Case of the Jim Crow Museum

Palmer Commons Forum

David Pilgrim, Vice President for Diversity and Inclusion,
Ferris State University

W.E.B. Du Bois said, on the launch of his groundbreaking 1903 treatise *The Souls of Black Folk*, “for the problem of the Twentieth Century is the problem of the color-line”—a prescient statement. From the dawn of that century to its conclusion, the United States struggled with the relationship between its white citizens and its citizens of color. Sometimes this struggle manifested itself in blatant and horrific affronts to the democratic ideal, for example, the creation of a racial hierarchy, undergirded by violence, including lynchings. The United States is today a more democratic and egalitarian society than the one that produced Du Bois or the one that he predicted; nevertheless, race and racism still matter—and, will likely continue to matter in the future.

Museums can play an important role in addressing societal issues, including racism, by creating spaces for intelligent and sustained dialogue about race and race relations. In this session, the presenter will discuss the history, vision, and practices of the Jim Crow Museum, the nation’s largest publicly accessible collection of racist artifacts—and, offer recommendations on how other museums might approach teaching and learning about racism in the present and the future.

Embracing the E-Revolution: Incorporating the Delivery of Digital Content into Processes and Protocols at The Henry Ford

Palmer Commons Great Lakes North

Mary Fahey, Chief Conservator, The Henry Ford
Jillian Ferraiuolo, Digital Imaging Specialist, The Henry Ford
Patrice Fisher, Collections Specialist, The Henry Ford
Ellice Engdahl, Digital Collections and Content Manager,
The Henry Ford
Cayla Osgood, Conservation Specialist, The Henry Ford
Kristen Gallerneaux, Curator of Communication & Information
Technology, The Henry Ford

Web culture has changed the expectations of museum visitors, staff and researchers, challenging museums to alter the way that they display, steward and provide access to collections. The most basic of museum functions are increasingly intertwined with the need to facilitate greater access to collections online. In response to these changes The Henry Ford has developed a comprehensive practical working system that incorporates all functions of traditional museum work with improved cataloging and the production of digital content. Object information and images are quickly made available to The Henry Ford staff, facilitating the development of key content, interpretive ideas and themes, feeding multiple, publicly available, digital collections interfaces.

This session will show our working system through the case study of an IMLS grant funded project that addresses several key institutional priorities and supports the development of new visitor experiences while tackling some long-standing problems in a large collections storage area. This session will describe the two year project which focuses on the communications artifacts of the Digital Life exhibition, including the identification, cataloging, conservation, re-housing, relocation and digitization of 1,000 artifacts. Work processes, challenges and lessons learned to date along with methods for tracking progress by search, task management, and reporting tools in THF’s collection information system KE Software’s Electronic Museum (EMU) will be discussed, as will the response from researchers and others to The Henry Ford’s increased online presence.

This presentation is aimed at assisting organizations seeking to incorporate digitization into their ongoing museum functions.

Building a New Audience: Programming at Historic Sites

Palmer Commons Great Lakes Central

Dr. Thomas Henthorn, Professor of History,
Institutional Affiliation: University of Michigan-Flint
Samantha Engel, Executive Director,
Whaley Historic House Museum
Jeffrey Pollock, Administrator,
Sanilac County Historic Village and Museum

Historic sites often feel the impact of museum challenges to a higher degree. Since they often lack large, changeable exhibit space, a wider interpretational focus, and, with some exceptions, large budgets they need to be creative in their solutions to problems. Historic sites have seen the need to rethink their programs as a means to revive interest in their space as audiences are changing, along with their leisure and spending habits. How, then, are small museums ever going to compete to attract new audiences, and compete for leisure dollars, with their larger counterparts?

This session will explore how two different sites are preparing for these future changes. Samantha Engel, Executive Director of the Whaley Historic House Museum, will discuss how she has attempted to rethink programming for a new audience,

while still maintaining the aging audience that has faithfully supported the site for decades. Specifically, she will discuss new “series” programming and an annual program meant to attract a younger audience.

Jeffrey Pollock, Administrator of the Sanilac County Historic Village and Museum, will examine the efforts undertaken by a resort community institution, focused on expanding visitor experience beyond the confines of the museum proper. Particular focus will be given to expanding efforts that bring new visitors not only to the village and museum but also the surrounding region. These efforts have not only relied on the internal resources of the museum, but also on local businesses, with a mutual stake and gain for each.

Building Collaborations through the Small Collections Network

Palmer Commons Great Lakes South

Ellen V. Sprouls, Independent Contractor
Anna Monfils, Associate Professor,
Central Michigan University

The Small Collections Network (SCNet, schnet.acis.ufl.edu) is an informal network of small natural history collections representing museums and academic institutions in all domains of the natural sciences. SCNet was launched through the North American Network of Small Herbaria (NANSH) working group and sponsored by Integrated Digitized Bio-collections (iDigBio). iDigBio is the U.S. National Science Foundation's resource for the digitization of biological collections through its Advancing Digitization of Biological Collections program, a 10-year, \$100 million initiative to digitize all biological collection objects in the United States. SCNet is closely affiliated with the Society for the Preservation of Natural History Collections (SPNHC). SCNet's goal is to recruit, retain, and sustain small collections within national and regional digitization initiatives. SCNet was established to ensure full participation of small museums and collections in the greater collections community. Current projects have been focused on establishing networks of professionals to facilitate curation and digitization and fostering greater interaction among small collections of all types. As SCNet continues to grow we are reaching out to small collections outside of the natural sciences. This session will outline SCNet's current collaborations and initiatives at the local, regional and national levels, including what has worked, what we have learned, and the challenges that remain. The discussion following the presentation will solicit examples of successful collaborations among all types of small museums and explore how SCNet and MMA can collaborate on mutually beneficial initiatives.

Lunch and Awards

12:15 – 1:45 pm

Michigan League Ballroom

The Michigan Museums Association will honor and recognize four members of the Michigan Museums Community:

MMA Volunteer – Sanam Arab

President's Award - Marilyn Merdzinski

Peninsulas Prize- Nancy Villa Bryk

Peninsulas Prize- David Pilgrim

Sponsored by The Henry Ford

Concurrent Sessions

2:00 – 3:00 pm

Creating and Implementing a Visitor Accessibility Plan at Institutions Small and Large

Palmer Commons Forum

Caroline Braden, Guest Accessibility and Special Needs Assistant, The Henry Ford
Sarah Mullersman, Coordinator of K-12 and Community Outreach, Kelsey Museum of Archaeology, University of Michigan.

Museums must increasingly be cognizant of making their spaces accessible to and inclusive of all whom they serve. Accessibility and inclusion involve removing barriers for individuals with all manner of physical and cognitive disabilities, something that is becoming increasingly important as diseases such as Alzheimer's and developmental disorders such as autism affect a growing number of people. In this session, participants will gain ideas for creating and implementing a plan for enhancing visitor accessibility and inclusion at institutions small and large.

The first part of this session will provide an overview and background of the field of visitor accessibility, including examples of offerings and programs at museums for people with disabilities, tips for working with community members to find out what benefits them, and ideas for taking this knowledge and applying it within an organization of any size. The second part of the session will feature case studies of two museums of different size and scope – the Kelsey Museum of Archaeology and The Henry Ford. These case studies will highlight the initial impetus for accessibility work at each place, the steps that have already been taken to improve access and inclusion, and plans for the future.

Inextinguishable—A Conversation with Detroit Artist Tyree Guyton

Palmer Commons Great Lakes North

Tyree Guyton, Artist and Creator, Heidelberg Project
Jenene Whitfield, COO, Heidelberg Project
Ray Silverman, Professor, History of Art, Afroamerican and African Studies, and Museum Studies, University of Michigan

For almost thirty years, the abandoned houses that dot Detroit's Heidelberg Street have provided the backdrop to a kaleidoscopic display of outdoor art installations that aim to inspire and provide healing to the local community. In 2013 and 2014, a series of twelve arson fires gutted six installations on the Street, the most devastating assault on the Heidelberg Project in over twenty years. Renowned artist Tyree Guyton has used this opportunity to re-double his efforts on the Heidelberg Project. Debris and ash have been cleared away and new art emerges from the foundations of the burned out structures, working through the walls of charred basements, surfacing with creative new visions and voice.

In a rare public appearance Tyree Guyton, along with Jenene Whitfield, will discuss new themes emerging on Heidelberg Street, spearheading an arts community poised for change, a forthcoming 30-year retrospective publication (in Guyton's own words), and other exciting ideas resulting from the fires.

The community grounded model provided by the Heidelberg Project continues to fascinate museum professionals, providing a connection from the non-collecting museums first proposed by John Cotton Dana in the early twentieth century to the socially relevant museums advocated in our own time by Stephen Weil and Elaine Heumann Gurian.

Preparing for Change: Training the Next Generation of Museum Professionals

Palmer Commons Great Lakes Central

Nancy E.V. Bryk, Assistant Professor of Historic Preservation, Eastern Michigan University
Teresa Goforth, Exhibitions Manager, Instructor of Museum Studies, Michigan State University
Daniel Kroupa, Lecturer in History and Museum Studies, University of Detroit-Mercy
Kirsten E. Nicholson, Curator of Natural History, Central Michigan University
Carla Sinopoli, Professor of Anthropology and Director, Program in Museum Studies, University of Michigan

The museum profession is rapidly evolving. Our work is full of challenges. Creating programs with constrained finances, incorporating rapidly-changing technologies, and understanding needs of diverse audience members is just a part of the landscape.

Museum studies/museum practice programs within the state approach the training of the next generation of professionals differently. This panel includes the principals from a number of

the state's programs who will each discuss their program and its particular approach to curriculum.

Specifically, panelists will discuss: + how the programs gather information on what future employers seek in museum professionals + what information instructors use to understand how the field is changing + the curriculum developed to address these needs, according to your institutional imperatives (program/university philosophy, market, etc) + the positions into which our students are placed and how that affects our curriculum development.

The panel will also include feedback from recent graduates placed into positions. We will set aside time, before question and answers, to specifically solicit comments from current and mid-level professionals to discuss their thoughts on prepping our students for change.

NAGPRA Basics

Palmer Commons Great Lakes South

J. Amadeus Scott, NAGPRA Collections Assistant Manager, University of Michigan
Museum of Anthropological Archaeology
William Johnson, Curator, Zibiwing Center of Anishinabe Culture & Lifeways and Chairman, Michigan Anishinabek Cultural Preservation & Repatriation Alliance (MACPRA)

The Native American Grave Protection and Repatriation Act of 1990 (also known as NAGPRA) creates a federal legal process for the return of Native American human remains and cultural items to Native American Tribes and Native Hawaiian Organizations. Although the law was enacted almost 25 years ago, the NAGPRA process continues (and will continue in the future) to develop, as the law is clarified through the promulgation of regulations.

This session will provide museum professionals with a basic overview of NAGPRA compliance, through consideration of both museum and Tribal sides of that process. The conversation will explore the potential development of NAGPRA regulations in the future, with discussion of specific changes for the regulations on the immediate horizon and potential development that may be further out. Topics covered will include who is required to comply with NAGPRA, consultation and transfer processes, ways for providing a respectful environment, and forging a connection between museum best practices and Tribal ceremonial needs. The session will offer an opportunity for dialog about the compliance process, and about Tribal and institutional policies for NAGPRA compliance with a focus on practical advice.

Tours

3:00-5:00

Leaving from Palmer Commons

All tours will take place on Thursday, October 1 beginning at 3:00. Tours are included in the conference registration. Transportation to each tour venue varies, and all involve some walking. Sign up at the registration table, if you haven't already.

Ann Arbor Hands-On Museum

Participants will have a tour of the Museum and the 250+ interactive exhibits. These include an extensive water gallery, preschool gallery, nanoscience exhibit, Google Earth display, Lyons Country Store, Michigan Nature gallery, light and sound exhibits, and much more. We'll also set up a fun hands-on activity, similar to one we offer to schools and libraries for outreach programs!

Tour will meet at Palmer Commons and walk a quarter of a mile (15-20 minutes) to the museum.

Bentley Historical Library

"Planning for Change" is an apt description for the current strategy of the University of Michigan's Bentley Historical Library. As the university's archives and a major repository for manuscripts and archives from throughout the state of Michigan, "The Bentley" is planning and undergoing significant transitions in engaging undergraduates, in digital curation of original manuscripts and audio recordings, in online and print outreach, and in project-based conservation of photographs. Academic archivists, digital curators, and the head of conservation will present brief overviews of the Bentley's academic and curatorial initiatives as they lead MMA visitors from the library's classroom, through its newly-redesigned reading room to the state-of-the-art conservation laboratory.

Tour will meet at Palmer Commons and take a charter bus to the north campus where participants will walk a short distance to the library.

Gerald R. Ford Presidential Library

Held within the walls are Gerald R. Ford's presidential, vice presidential and congressional papers; including his Warren Commission files. Visitors can browse lobby exhibits and peek inside President Ford's Ann Arbor office. On display are exhibits detailing President Ford's early life, years at the University of Michigan and Yale, continuing with his years as a Congressman, then Vice President and finally President. Draw Down Vietnam is a temporary lobby exhibit on display through October 2015 detailing Operation Babylift and the rescue mission of the S.S. Mayaguez.

Tour will meet at Palmer Commons and take a charter bus to the north campus where participants will walk a short distance to the library.

Kelsey Museum

What shifting dynamics motivated different people to collect antiquities from the late 19th century through the aftermath of World War II? What circumstances formed the artifact-biographies of the collected things we see behind glass in their display cases? *Passionate Curiosities: Collecting in Egypt and the Middle East 1880s – 1950s* chronicles people from unsung missionaries to fabulously wealthy entrepreneurs of the Gilded Age, from famous scholars to infamous wheel-dealers, whose fascinating entanglements forged the ancient Egyptian and Near Eastern collections of the Kelsey Museum. The exhibition focuses on sagas that are part of the historical legacy of the State of Michigan. Along with wonderful vintage photographs and seldom-seen treasures in the Museum, visitors can link favorite artifacts on permanent view to remarkable backstories. Please join the exhibition's curator, Prof. Margaret Root, for this captivating exploration into the history of the Kelsey Museum's collections.

Tour will meet at Palmer Commons and walk across campus about a half-mile to the museum.

Museum of Anthropological Archaeology

The UM Museum of Anthropological Archaeology houses more than 3 million archaeological and ethnographic objects from around the world. This tour will take visitors to the Museum's South Campus storage area to visit the ethnographic collections. Highlights include more than Native America baskets and pottery; materials from the Chinese exhibition at the 1885 New Orleans World's Fair; a remarkable collection of Western Himalayan paintings and ritual objects; Polynesian tapa cloth, among many others.

Tour will meet at Palmer Commons and take the free university bus to the storage facility. Participants will need to walk about 5 minutes from Palmer Commons to the bus stop and be able to stand and walk in the collection area. No stairs required.

Nichols Arboretum of the University of Michigan

Expand your perspective of museums as you explore one of the most distinctive and beloved museums on the UM campus – the Nichols Arboretum. Designed in 1906 by O. C. Simonds, one of America's foremost landscape architects who helped establish the Prairie Landscape Style, 'The Arb' has grown to include 123 acres. Signature collections range from North America's premier historic herbaceous peony collection to restored landscapes representative of pre-settlement Michigan.

Tour will meet at Palmer Commons and walk to the Arboretum. Come prepared for a robust walk on the trail system, which is surfaced but unpaved. We will walk between 1.5 and 2 miles in total during the 2 hours. Dress for the weather – sensible walking shoes suggested.

Sindecuse Museum of Dentistry

Open Wide! Behind the Scenes with the Sindecuse Museum of Dentistry: Get up close and personal with the Sindecuse Museum on this exclusive behind the scenes tour. Discover our specialized collections as you walk the unconventional galleries found integrated within the School of Dentistry with our Curator, Shannon O'Dell. Learn about our museum's history and founder Gordon H. Sindecuse while we highlight unique collections both on exhibit and hand-picked artifacts behind the scenes. (Spoiler alert: No wooden teeth from George Washington but we do have a unique connection to Dr. Jack Kevorkian!)

Tour will meet at Palmer Commons and walk to the museum. The shortest route is down one stairway outside and a few steps inside- it is about 500 feet between Palmer Commons and the museum. The stair-free route is about 800 feet total.

University of Michigan 3D Lab

Ever wonder what all the hype around 3D Printing is really about? Would you like your patrons to step inside a digital recreation of an ancient space? Are you wondering how you can leverage digital technologies to bring artifacts out of storage into the public eye? Join us at the University of Michigan 3D Lab for a tour of several cutting edge technologies including 3D Printing, Scanning and Photogrammetry, Virtual Reality, and Motion Capture.

Tour will meet at Palmer Commons and take a charter bus to the north campus where participants will walk a few blocks to the lab.

University of Michigan Museum of Art

Spend the afternoon with the Education and Collections & Exhibitions departments to learn about outreach, education and registration at an art museum: Paper Study classrooms - Learn about how UMMA provides a various array of outreach for the public to work with our collection in a personalized format; K-12 tours – Participants will experience a tour of UMMA's galleries by exploring our approach to creating curricular connections to subject areas of science, writing, and social studies. UMMA staff will discuss how we serve different audiences, facilitate discussion, answer questions with the topics of: K-12 programming, University and Co-curricular programming for college students, working with special audiences (dementia/Alzheimer and other health-related) and registration and collections concerns

Tour will meet at Palmer Commons and walk through campus about a half-mile to the museum.

University of Michigan Museum of Natural History

Museum on the Move! In 2018/2019, the U-M Museum of Natural History will be moving into a new facility shared with active research labs. (You know that construction fence you've been walking by all week? We're part of that project.) Learn about our vision for reinventing the Museum. Staff from administration, exhibits, education and dome theater will describe our planning process. The afternoon will also include a guided tour of the current facility.

The tour will meet at Palmer Commons and walk .2 mile to the museum. Some areas in the tour may be cramped.

Evening Reception

5:30-7:30

University of Michigan Museum of Art

Conference attendees will gather at the University of Michigan Museum of Art, considered one of the finest university art museums in the country. UMMA holds collections representing 150 years of art collecting at the University, while its dynamic schedule of special exhibitions and interpretative programs connects visitors with the rich artistic legacy of the past and today's avant-garde.

Dinner on your Own

Pub Crawl

8:00

Ashley's, 338 South State St.

Meet at Ashley's to start a tour of several fabulous Ann Arbor watering holes.

*Sponsored by the Ann Arbor
Convention and Visitors Bureau*

FRIDAY, OCTOBER 2

Concurrent Sessions

9:30 -10:30 am

Registration open

9:00 am – 4:45 pm

Palmer Commons Atrium

Pick up your nametag and registration materials, securely charge your mobile device, or ask questions about the conference or MMA.

*Totebags sponsored by Quinn Evans Architects
Charging Station sponsored by Musynergy*

Conversation Station

9:00 am – 12:30 pm

Palmer Commons Atrium

The Great Lakes Fisheries Heritage Consortium wants to talk to you! Do you have artifacts related to the fishing industry in your collection? Do you know of resources to help this group with their mission to map fisheries heritage resources and facilitate networking? Can you suggest ways they can promote the Great Lakes Fisheries Heritage Trail? Stop by and join the conversation.

Local Museum Showcase

9:00 am – 12:30 pm

Palmer Commons Atrium

Museums and cultural organizations from the Ann Arbor area will highlight their offerings and share information about their institutions through displays that have been created especially for this conference.

Student Coffee

9:00-10:00 am

Palmer Commons Atrium

Students are invited to meet and talk with MMA Board members and others interested in supporting future members of the museum field.

Sponsored by the University of Michigan Library

A Brave New World: Bringing Docents into the 21st Century

Palmer Commons Plaza (3rd Floor)

Andrea Morgan, Docent Program and Group Tours Senior Coordinator, Grand Rapids Art Museum
Jason Dake, Curator of Education, Denno Museum Center

Fifteen years into the new millennium and we are just beginning to understand the demands of this new century. As educational institutions, museums are adapting to the changing world by providing opportunities for guests of all ages to be 21st century learners. At this session, learn how the Denno Museum Center and the Grand Rapids Art Museum brought their docent corps into the 21st century and how docents are working to develop tours that promote 21st century skills and Visual Literacy.

Student Papers I

Palmer Commons Great Lakes North

- Creating a Sustainable and Relevant Creative Culture
Renee Brewster, Michigan State University
- Making a Case for Museum Communities as Partners in K 12 Education: Cross-Curricular Efforts in Schools can be Reinforced in Detroit
Hillary Hanel, University of Leicester
- Spirited Encounters: A Critical Analysis
Annmarie Nagy, University of Detroit Mercy

No Money for Changes? Designing and Building High-Impact, Low-Budget Exhibits

Palmer Commons Great Lakes Central

Elizabeth Chilton, Manager of Curatorial Affairs, Arab American National Museum
Peg Upmeyer, Director, Arts & Scraps
Meredith Gregory, Michigan Science Center
Karl Mayry, Principal, Through the Learning Glass LLC
Leslie Pielack, Museum Director, Birmingham Historical Museum & Park

In an environment where museum visitation is spiraling steadily downward, our museums must change to ensure we are relevant and engaging. Stagnant exhibits are the death knell of many museums resigned to the belief that they do not have the money to make changes.

Elizabeth Chilton will introduce the session with an example of how the Arab American National Museum used cardstock and fishing line to breathe new life into an old traveling exhibit.

Peg Upmeyer will share examples of some of the exhibits her organization has created using industrial scraps. Attendees will learn how to locate materials that could become the basis of their own low-cost or no-cost projects.

Meredith Gregory will share an overview of several low-budget, highly-interactive, and easily replicable exhibit experiences created during her time with the Detroit Children's Museum and the Michigan Science Center.

Karl Mayry will discuss his "guerrilla approach" to create exhibits in a time of "Yes, but we have no budget for that!" Karl will relay how the Cranbrook Institute of Science created a last-minute, no-budget exhibit add-on that sparked a series of public programs and eventually became a permanent addition to the Dossin Great Lakes Museum.

Leslie Pielack will explain how her small museum used basic tools and almost no funds to create a high impact exhibit and snag the collection of a lifetime. Attendees will learn how Leslie made this happen and get simple pointers on how they can do it too.

The session will end with general advice from presenters and Q&A with attendees.

Passionate Praxis: Rethinking the Museum on the Streets of Detroit

Palmer Commons Great Lakes South

Maria Cotera, Associate Professor of American Culture, Women's Studies and Latino Studies, University of Michigan
Diana Rivera, MSU libraries
Mick Kennedy, Taubman School of Architecture and Urban Planning, University of Michigan
Elena Herrada, La SED Detroit

Detroit, Michigan has become an emblematic symbol for multiple narratives about the "decline" of post-industrial society as well as possible avenues for revival of urban culture. These narratives all too frequently center on the drama of Black/White relations; a tendency that invisibilizes the complexity of Detroit's multiethnic history, and misrepresents the role that ethnic communities—particularly Latina/o and Arab American communities—have played (and continue to play) in the life of Detroit. Seeking to address these gaps in our collective knowledge – which seemed particularly salient in a moment of "revitalization" and rapid change to some neighborhoods in the city -- a group of scholars and community organizers began meeting in 2009 to discuss the need for a museum documenting Latina/o history in Detroit and the greater Midwest. Given the scant economic resources at our disposal and relatively few connections to traditional levers of institutional, political or social power in the region, the collective developed El Museo del Norte as a "museum without walls" that performs the essential functions of a traditional museum

without the benefits (and liabilities) of owning a building. In a "museum without walls" the community develops and curates exhibits, and teaches and shares with its members their history, art and culture through pop-up exhibits, cultural events, and community partnerships. In this presentation Maria Cotera will discuss the project and the challenges and opportunities of the "museum without walls" concept. Respondents, all of whom have been central to El Museo del Norte's conceptualization, will offer their perspectives on the project and its future.

Break

10:30 – 11:00 am

Palmer Commons Atrium

Sponsored by Boxcar Studios

Concurrent Sessions

11:00 am – 12:00 pm

Changing Your Practice Through Regular Audience Evaluation

Palmer Commons Plaza (3rd Floor)

Daryl Fischer, Musynergy Consulting
Melissa Horton, Program Director-Visitor Experiences, Lakeshore Museum Center
Annoesjka Steinman, Executive Director, Lakeshore Museum Center

Whether you work in a small museum with a staff that's supplemented by part-time employees and volunteers or a large museum with a staff that includes in-house evaluators, everyone can improve their practice by listening to visitors. Regularly. This session will introduce simple but effective audience evaluation techniques that use small samples to lead to informed decision-making and actionable next steps. Techniques such as unobtrusive observation, post-visit interviews, rapid prototyping, and gallery activities using Post-it notes can provide useful feedback at various stages of exhibition and program development. We'll explore ways to tailor each technique to your museum's resources and incorporate them in your practice. And because sharing findings with your colleagues is so important, we'll hear from a museum director and a program director about how these techniques have helped them start to build a body of audience evaluation knowledge and a culture that is responsive to visitor feedback.

Student Papers II

Palmer Commons Great Lakes North

- **Maintaining Relevance in the Age of Austerity: Lessons from a Salvadoran Museum**
Diana C. Sierra Becerra, University of Michigan
- **The Role of Artistic Freedom in New Exhibitions: Berlin's Ethnographic Museum's Collaboration with Das Helmi**
Courtney Cottrell, University of Michigan
- **Clara Ford and Fair Lane: A Response to Modernity**
Shelly Neitzel, Eastern Michigan University

Beyond the Marble Walls: Building Relationships Outside your Museum

Palmer Commons Great Lakes Central

Jillian Reese, Community Relations Specialist,
Detroit Institute of Arts
Kathryn Dimond, Director of Community Relations, Detroit
Institute of Arts
Larry Baranski, Director of Public Programming,
Detroit Institute of Arts

Culture plays a central role in democracy, and museums have important cultural resources that bring value to community needs and interests. Sometimes museums have a hard time connecting those resources to the people who would benefit from them most. The Detroit Institute of Arts brings museum programs, like Inside|Out, Reveal your Detroit, and the Movies at MetroParks, beyond its walls to build relationships with key community stakeholders and to demonstrate its value to the community in new and unique ways. This session will explore strategies that every museum can employ to bring museum programming from the inside out, creating opportunities for deeper engagement with its public.

Visual Integration: Incorporating Collections Narratives Into Educational Environments

Palmer Commons Great Lakes South

Stacey Tvedten, Program Coordinator,
GVSU Art Gallery
Nathan Kemler, Curator of Collections Management,
GVSU Art Gallery
Ellen Adams, Assistant Professor,
GVSU Frederik Meijer Honors College

This session will address strategies for engaging communities through collections and collaborative learning. The speakers will share examples of actively integrating the art collection into course curriculum at Grand Valley State University and give examples of how collections and exhibitions contribute to interdisciplinary learning through programs, teaching

and other activities. By harnessing new forms of technology, strategically building community relations, and encouraging object-based engagement, the collection has been used in a variety of programs including performances, writing exercises, formal art history analysis and undergraduate research, local history surveys, and computer programming-related projects.

This multi-tiered approach to integrating visual literacy into interdisciplinary educational opportunities points to a larger trend of placing the collection's purpose beyond traditional museum constructs and encourages more participatory and learner-centric experiences. Questions this forum-style session will address are: A) What are the major themes of and ways in which participants' collections can be utilized to engage communities? B) What are the ways to identify local collaborative partners and integrate them in learning engagement opportunities? C) How do we encourage and support our constituents to engage with our collections on their terms and in their own ways?

Lunch and MMA Business Meeting

12:15 -1:45 pm

Michigan League Ballroom

The Michigan Museums Association Annual Meeting will review the accomplishments over the past year, current status of the organization, and the election of members of the board and officers.

Sponsored by Timothy J. Chester

PLENARY

Museums, Collections and the History of the University of Michigan: Looking Backwards and Forwards During the U-M Bicentennial

Carla Sinopoli, Director, University of Michigan
Museum Studies Program

In 2017, the University of Michigan will celebrate its 200th anniversary, commemorating its founding in Detroit in 1817 on land provided by Native American nations. It was in 1837 that the University moved to Ann Arbor. This was the year of Michigan's statehood and in the same act that relocated the university to Ann Arbor, the state legislature also made provisions for the creation of a Cabinet of Natural History on the new campus. Thus, the history of our state, the University of Michigan, and its museums and collections became closely intertwined. In this talk, I explore this history – looking backwards to the beginnings of our museums and collections, and forward to the roles that the University's eleven currently existing museums continue to play in the teaching, research, and public life of the University.

Sponsored by Mackinac State Historic Parks

Break

3:00 – 3:30 pm

Palmer Commons Atrium
Featuring Zingerman's

Sponsored by the American Museum of Magic

Museum Café

3:30 - 4:30 pm

Palmer Commons Great Lakes Central

Museum Café allows small groups of people to have conversations and brainstorm in an informal setting. Participants will have a variety of topics to choose from and multiple opportunities for different conversations.

Sponsored by The Kane Group, Inc.

Closing Reception

4:45 - 6:00 pm

University of Michigan Museum of Natural History

The conference wraps up with a lovely evening reception at the University of Michigan Museum of Natural History, a dynamic, evolving museum that provides a window into natural science research conducted at the university. It houses the state's largest collection of dinosaur and geologic specimens, anthropology collections, wildlife exhibits, and a recently renovated planetarium.

SATURDAY, OCTOBER 3

Post Conference Workshop

The Art of Giving Great Service: How Zingerman's Treats Customers Like Royalty

10:30-12:30

Hatcher Library

Zingerman's has set the standard for great customer service in the specialty foods industry. This success has come from combining an innovative service philosophy with practical working systems, both of which ZingTrain will share in this workshop. Zingerman's approach has been successfully applied in wide variety of businesses and non-profits that are committed to improving the quality of their customer service, including specialty food and other retailers, banks, insurance agencies, health care providers, museums, schools, and libraries. By the end of this workshop, participants will be able to explain Zingerman's approach to customer service and how it can be customized to work within their own organization and be able to call upon a network of peers to help get past roadblocks.



expertise



engagement



advocacy

**Michigan Museums
Association shares expertise
and resources to promote
standards and
practices that make the
Michigan museum
community thrive.
#MiMuseums**

Special Thanks

This conference would not be possible without the generosity of our sponsors, the dedication and creativity of the volunteers, and the involvement of the board of directors and staff.

Thank you to all!

Sponsors

American Museum of Magic
Ann Arbor Convention and Visitors Bureau
Boxcar Studios
Detroit Institute of Arts
Historic Ford Estates
Mackinac State Historic Parks
Musynergy
Nancy Bryk
Quinn Evans Architects
The Henry Ford
The Kane Group, Inc.
Timothy J. Chester
University of Michigan Libraries
University of Michigan Museum Studies Program

2015 Conference Volunteers

Programs

Brad Taylor
Catalina Esguerra
Steve Arseneau
Andrea Morgan
Amy Reiman
Jason Dake
Lizz Wilkinson

Communication

Bettina Cousineau
Kelsey Schnell
Helen DeMarsh
Kate Murray

Revenue

Nancy Bryk
Cheryl Chidester

Operations

Amy Smola
Jordan Taylor

Events

Matt Linke
Carla Sinopoli

Engagement

Cathy Person
Caroline Braden
Kelly Beattie
Nathan Kemler
Angela Riedel

Awards

Stacey Tvedten

MMA Board of Directors

President Ron Bloomfield
Bay County Historical Society

Treasurer Bruce Lynn
Great Lakes Shipwreck Museum

Secretary Sarah Waters
Thunder Bay National Marine Sanctuary

Vice President for Programs Claire Johnston
Historic Charlton Park

Vice President for Membership Emily Fijol
Michigan Women's Historical Center & Hall of Fame

Vice President for Marketing Kelsey Schnell
Mackinac State Historic Parks

Loraine Campbell
Troy Historic Village

Mark Heppner
Historic Ford Estates

Dan Kroupa
University of Detroit Mercy

Henry Matthews
Grand Valley State University Art Gallery

Angela Riedel
Museum of Cultural and Natural History, Central Michigan University

Bradley Taylor
University of Michigan Museum Studies Program

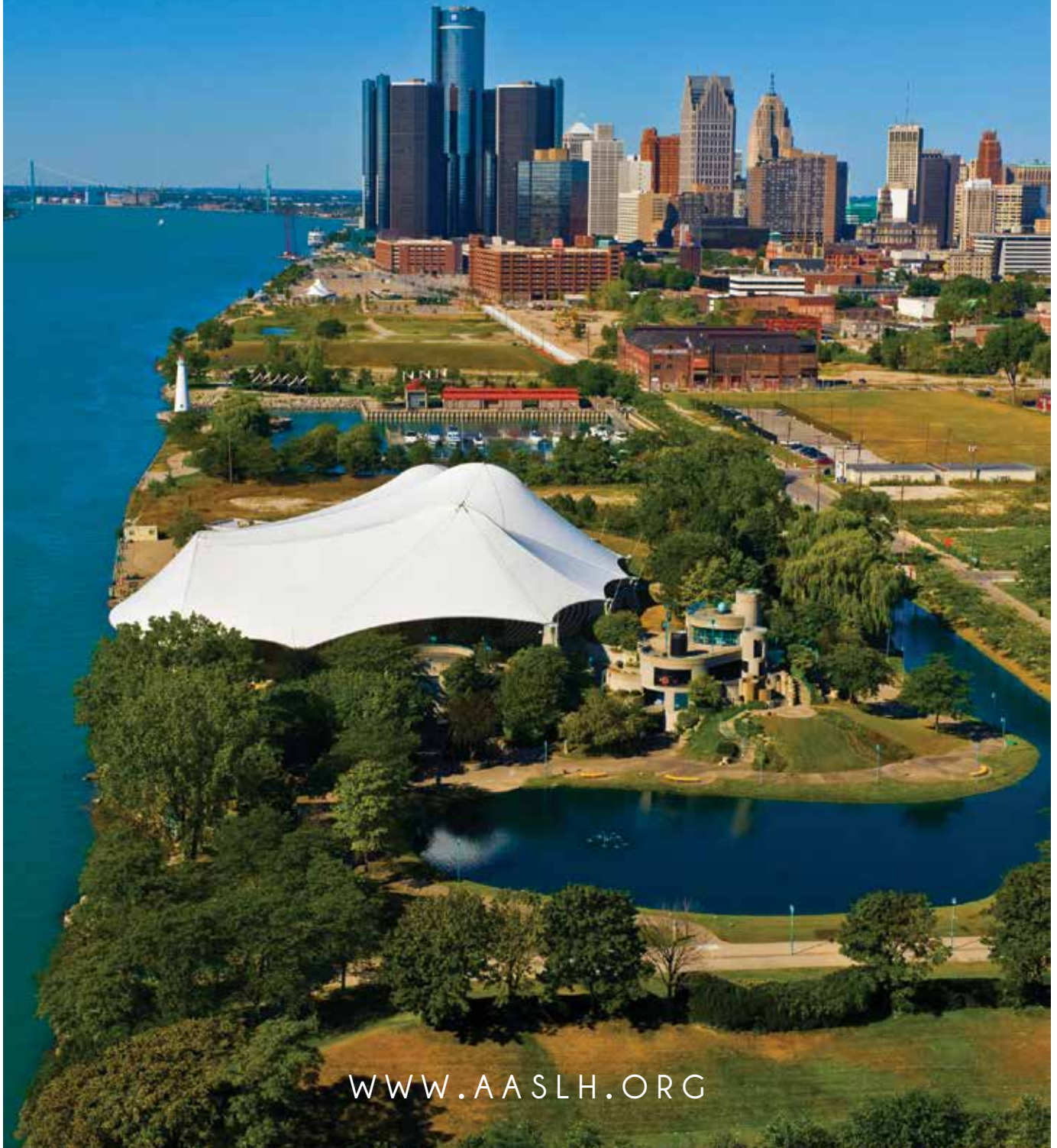
MMA Executive Director

Lisa Craig Brisson

AASLH AND MICHIGAN MUSEUMS ASSOCIATION ANNUAL MEETING

THE SPIRIT OF REBIRTH

SEPTEMBER 14-17, 2016 DETROIT, MI



WWW.AASLH.ORG



American Association for State and Local History

Your Home for History



Establishing a Home for Community History at 1528 Pontiac Trail

The AACHM was founded in 1993 to research, collect, preserve and exhibit cultural and historical materials about the life and work of African Americans in Washtenaw County. The Museum is working to open in 2016 at 1528 Pontiac Trail in Ann Arbor.

The African American Cultural & Historical Museum of Washtenaw County

In partnership with

THE MOSAIC FOUNDATION
(of R. and P. Heydon)

Richard Mitchell
Mitchel & Mouatt Architects

AACHM

www.aachmuseum.org

email: aachmuseum@gmail.com

PO Box 130724, Ann Arbor, MI 48113

Proud Supporter of the Michigan Museums Association



Historical Museum of Bay County
321 Washington Avenue
Bay City, MI 48708
989-893-5733
www.bchsmuseum.org

MMA Meet and Eat Sponsor



Sharing the wonder for 37 Years!

Proudly supported by
Michigan Council for Arts and Cultural Affairs
National Endowment for the Arts
Meijer, Inc.
Marshall Community Foundation

Museums interested in hosting our traveling exhibition
Mystery, Magic and Mayhem: Wonders from the American Museum of Magic
should contact Museum Administrator Keli Hindenach.



107 E. Michigan Avenue, Downtown Marshall
www.americanmuseumofmagic.org
269-781-7570



HISTORIC CHARLTON PARK



- Historic Village ○ Education Programs ○ Special Events ○
- Beach & Boat Launch ○ Recreation Area ○

New Exhibit! Test of a Nation: Honor of a County on display in the Irving D. Charlton Memorial Museum until December 14, 2015.

UPCOMING SPECIAL EVENTS:

All Hallows Eve – October 24, 2015

This family-oriented event includes hay rides, a costume contest, trick-or-treating through the Historic Village and other delicious treats.

Of Christmas Past – December 12-13, 2015

Come out and enjoy the sights, sounds, tastes, and activities of Christmastime in the late 1800's.

HOURS OF OPERATION:

Through Labor Day

Monday - Sunday 8 a.m. - 9 p.m.

Labor Day through Memorial Day

Monday - Friday: 8 a.m. - 5 p.m.

Free Admission
(excludes Special Events)



Village, Museum & Recreation Area
2545 S. Charlton Park Rd. Hastings, MI 49058
269-945-3775
www.charltonpark.org

Elia

ELLA SHARP MUSEUM



A place for *art, history, everyone.*

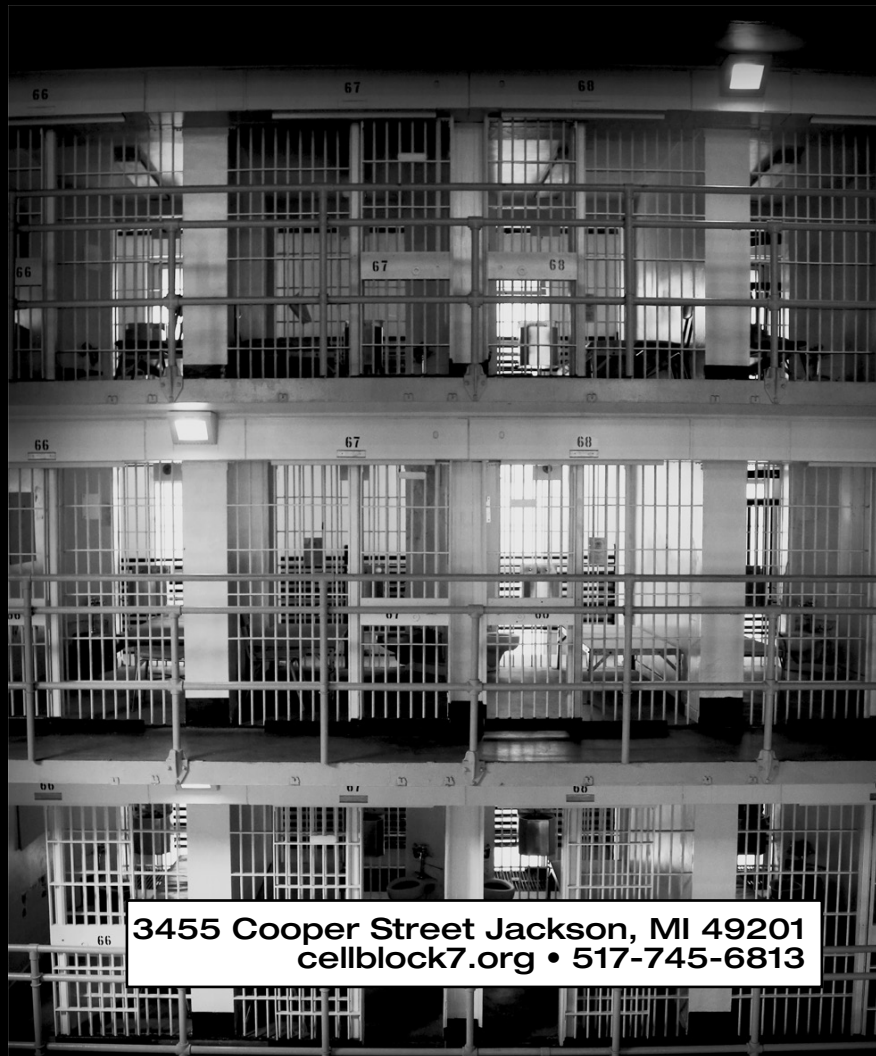
3225 Fourth St Jackson, MI 49203
ellasharp.org • 517.787.2320

CELL BLOCK
SEVEN 7

**SPEND SOME TIME
ON THE INSIDE.**

As close to prison as you ever want to
get!

Michigan's Prison Museum



3455 Cooper Street Jackson, MI 49201
cellblock7.org • 517-745-6813



GVSU ART GALLERY Explore.
Discover.
Share.



Please Join Us

We invite you to join the **GVSU Friends of Alten** to celebrate the legacy of the remarkable artist, Mathias J. Alten (1871-1938).

The Grand Valley State University Friends of Alten is an organization established to support the exhibition, acquisition, and care of the painting at the George and Barbara Gordon Gallery.

The Friends work to increase the awareness of Alten as a significant American Impressionist painter, and raise funds to support both the gallery and its mission.

George and Barbara Gordon Gallery

The George and Barbara Gordon Gallery, at the Richard M. DeVos Center in downtown Grand Rapids, is a public showcase for Grand Valley State University's growing collection of works by Mathias J. Alten. Consisting of paintings, as well as his family's archive collection of photos and letters.

George and Barbara Gordon Gallery
Richard M. DeVos Center
401 Fulton Street West
Grand Rapids, MI 49504
Friday-Saturday 1-5 PM, or
by appointment, free admission

gvsu.edu/artgallery

The Friends of Alten membership benefits include:

- Special educational programs with a focus on Alten's life and legacy including presentations by art historians, curators, critics and collectors
- Special members-only events
- Visits to private collections of Alten paintings
- Travel opportunities to explore Alten related paintings sites in Old Lyme, Taos, Spain, France and the Netherlands
- All membership and gifts may be tax deductible

Give online

www.gvsu.edu/giving/alten

Give by phone

(616)331-6000

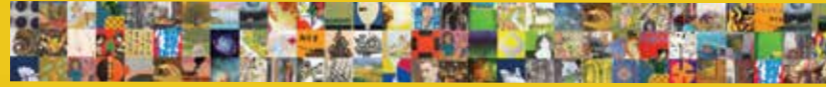
Monday-Friday, 8:00 AM-5:00 PM





GVSU ART GALLERY

Explore.
Discover.
Share.



Featured Exhibitions

Dusk to Dusk: Unsettled, Unraveled, Unreal
Through October 31, 2015

GVSU Art Gallery

Performing Arts Center
Allendale Campus

Drawn from a private collection in the Netherlands, the exhibition includes thirty-two singularly powerful works by internationally acclaimed artists including **Louise Bourgeois, Gilbert & George, Richard Long, Edward Burtynsky, Hiroshi Sugimoto, Erwin Wurm, Erwin Olaf, James Aldridge, Salvador Dali, Tony Cragg, Marcel Dzama, Matthew Day Jackson, and Ruud van Empel.**

This is a collaborative project between the **Grand Valley State University Art Gallery** and **De Pree Art Center and Gallery at Hope College.**

Dusk to Dusk was organized by the Samek Art Gallery at Bucknell University, curated by Richard Rinehart, Director of the Samek Art Gallery, with works generously loaned from THE EKARD COLLECTION. The exhibition is toured by Curatorial Assistance Traveling Exhibitions, Pasadena, California.

DUSK TO DUSK is generously sponsored by the **West Michigan Global Initiative.** Additional funding provided by **DeWitt Barrels, Inc.** and **The Bank of Holland.**

This exhibition is part of the GVSU Fall Art Celebration 2015. For additional Fall Arts Celebration programming please visit: gvsu.edu/fallarts

Mathias J. Alten American Impressionist
On-going

George and Barbara Gordon Gallery

Richard M. DeVos Center
Grand Rapids Campus

Come visit the largest public collection of the American Impressionist painter Mathias J. Alten (1871-1938) in the GVSU George and Barbara Gordon Gallery. Alten traveled the world in search of inspiration for his paintings, but he chose Western Michigan as his professional base and home. On view are over 70 paintings ranging from vibrant Spanish and Dutch coastal scenes to agrarian Michigan landscapes and beautiful floral still lifes.



Mathias J. Alten (German-born American, 1871-1938)
Waiting, Taos, Oil on Canvas, circa 1927
2014.50.3 Gift of George and Barbara Gordon
On display at George and Barbara Gordon Gallery



Hideaki Kawashima (Japanese, 1969-)
130, Painting 2004
On display at GVSU Art Gallery



Visit gvsu.edu/artgallery for exhibition details, upcoming events and access to the entire art collection online. Download our mobile app: **Art at GVSU**

Find us on:     

(top left detail) *Untitled*, **Hannes Postma**, Lithograph 1971. 2002.0337.1
The Cyril Lixenberg Collection of Contemporary Dutch Prints, a gift of the Brooks Family



Michigan Women's

HISTORICAL CENTER & HALL OF FAME

The only museum in Michigan dedicated to women's history, the mission of the Michigan Women's Historical Center & Hall of Fame is to inspire and engage adults and children by celebrating Michigan women's history, promoting educational opportunities, and honoring the accomplishments of Michigan women.

The Center is home to the Michigan Women's Hall of Fame, changing history exhibits, and a Fair Trade gift shop. The Center also offers a speaker's bureau, traveling exhibits, and meeting and event facilities.

Information on nominating an outstanding Michigan woman to the Michigan Women's Hall of Fame, as well as information on serving as a judge, can be found on our website.

213 W. Malcolm X Street

Lansing, Michigan 48933

517-484-1880

info@michiganwomen.org

www.michiganwomenshalloffame.org



Operated by the Michigan Women's Studies Association, Inc., a non-profit 501c3 organization.

The Michigan Photographic Historical Society

Announcing the Fall Photographica Fair

10:00-3:00, October 25th, 2015



Miners from Norway, MI



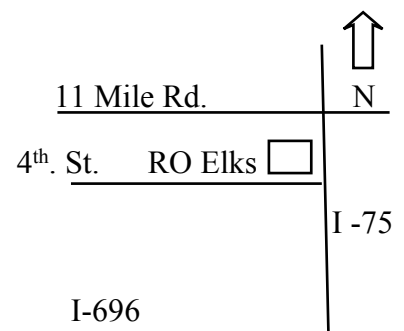
At the Royal Oak Elks Lodge
2401 E. Fourth St., Royal Oak, MI
(Two blocks south of 11 Mile Road and
just west of the I-75 service drive.)

Admission: \$6, FREE for students with current ID
(Parking entry from Fourth St. & the southbound service drive.)

Vintage cameras, photographs, postcards, ephemera, and
camaraderie! BUY-SELL-TRADE!

Hardware auction at 1:30

For information, visit our website, miphs.org,
email motz48073@yahoo.com, or leave a message
at 248.549.6026. MiPHS is a 501 (c) 3 non-profit
corporation.



WATCH OUR PROGRESS!

The U-M Museum of Natural History will move into new space in the Biological Science Building, now under construction, opening in late 2018 or 2019.


Visit ummnh.org for project updates, construction webcams, and information about contributing your ideas for new exhibits at monthly exhibit workshops through 2015!





**GREAT LAKES
SHIPWRECK
MUSEUM
AT WHITEFISH POINT**

- *Edmund Fitzgerald* Exhibit Featuring Ship's Bell
- Oldest Active Lighthouse on Lake Superior
- Lightkeepers Quarters and USCG Surfboat House Tours
- Shipwreck Museum Gallery and Theater
- Lighthouse Tower Tours Available
- New Children's Hands-on Exhibit
- National Historic Site
- Nature Trails and Overlooks
- Museum Store and Fudge Shop
- Overnight On-Site Accommodations Available 906-492-3747



Whitefish Point, Michigan's Eastern Upper Peninsula

WWW.SHIPWRECKMUSEUM.COM • 906-635-1742

John F. Kennedy Limousine
Henry Ford Museum®

“One of the
country’s best
museums...” — Condé Nast Traveler

Our 200 acres of innovation are a one-of-a-kind experience.
An astonishing collection started by Henry Ford himself. People
come here to see how it was, what it is — and where they can take
it. If you’re thinking ahead, this is your kind of place. What are
you waiting for?

Gain perspective.
Get inspired.
Make history.



the
**Henry
Ford**

Take it forward.®

Great Academics.

Great American City.

Great Values: Jesuit & Mercy.

Great Outcomes.

**Learn about our Museum Studies program at
liberalarts.udmercy.edu/programs/index.htm
or contact Daniel Kroupa at [313-993-1024/kroupadr@udmercy.edu](mailto:kroupadr@udmercy.edu).**



We want great things for you.
udmercy.edu



MUSEUM STUDIES PROGRAM UNIVERSITY OF MICHIGAN

Cross-disciplinary and cross-cultural graduate and undergraduate programs integrating theory and practice in the study of museums in the contemporary world

- Graduate certificate
- Undergraduate minor
- Public programming: lectures, workshops and conferences
- Capstone projects with local institutions
- On-line peer-reviewed working papers
- More than 65 affiliated faculty
- 40 regional museum partners across Michigan and northern Ohio

For more information visit
www.ummsp.rackham.edu



GLOBAL HERITAGE AT RISK

UNIVERSITY OF MICHIGAN MUSEUM STUDIES PROGRAM

FALL 2015 LECTURE SERIES

The news is full of ongoing threats to heritage sites and museums around the globe. In this series, speakers representing diverse countries examine contemporary threats to museums, collections, and historic sites in the Middle East, Greece, India, and the United States. Series speakers will document the many factors fueling the ongoing loss of objects, monuments, and historical places and will explore why heritage destruction in distant regions should matter to those of us thousands of miles removed from the most horrific ongoing threats. We also focus closer to home to consider the challenges to heritage preservation in our own backyard.

But this is not solely an exercise in despair, as speakers examine the ways that international organizations, national and local governments, NGOs, communities, and individuals are responding to the challenges facing countless museums and heritage sites. The results are new ways of defining the meaning and significance of heritage for local communities, new strategies for heritage documentation and care, and new opportunities for us all to become engaged in caring for our own and our world's irreplaceable cultural heritage.

- October 13 The “Calculated Frightfulness” of ISIS: Threats to Middle Eastern Cultural Heritage in Historical Perspective
Geoffrey Emberling (Kelsey Museum of Archaeology, University of Michigan)
- November 3 Cultural Heritage in Sites and Museums in India: Challenges and Opportunities
Shraddha Bhatawadekar (Nehru-Fulbright Academic and Professional Excellence Fellow, Center for South Asian Studies and Museum Studies Program, University of Michigan)
- November 10 To Amphipolis and Back Again: Crisis Management, Heritage Politics and Grassroots Activism as “New Heritage” in Greece
Despina Margomenou (Department of Classical Studies, Modern Greek Program, University of Michigan)
- December 1 *Cristunity*: Re-imagining Historic Sites at the National Trust
Katherine Malone-France (Vice President for Historic Sites, National Trust for Historic Preservation)

**All lectures will take place in the
Helmut Stern Auditorium, University of Michigan Museum of Art
6:30 PM**

Visit <http://ummsp.rackham.umich.edu> for the full listing of our fall events

All events are free and open to the public.



RACKHAM GRADUATE SCHOOL
MUSEUM STUDIES PROGRAM
UNIVERSITY OF MICHIGAN



John Veverka & Associates

Interpretive Planning, training
and design - World-Wide



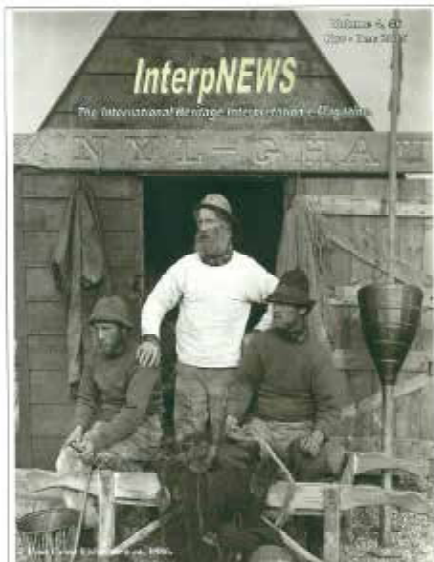
JVA is a full service heritage interpretation consulting, planning, design and interpretive training firm with over 40 years of interpretive planning and training experience. We are one of the only firms offering contract work in interpretation staffed by professionally trained interpreters (B.S. M.S. Ph.D. degrees *specifically in interpretation*). But we do so much more than that.

Our Services:

- Interpretive Master Planning
- Interpretive Exhibit Planning
- Evaluation and visitor survey research.
- Scenic Byways Interpretive Planning
- Interpretive Training Programs
- Heritage Tourism Planning
- Feasibility Analysis
- Interpretive Exhibits and Panels
- Interpretive Driving Tours
- Self-guiding interpretive experiences-
- Regional Interpretive Systems Planning
- Training Manuals and workbooks.

InterpNEWS - the International Heritage Interpretation e-Magazine.

InterpNEWS reaches over 155,000 interpreters, museums, historic sites, agencies and organizations in 36 countries, and subscriptions are **FREE**. Just send us your e-mail address and we will add you to the mailing list. It's published 6 times a year.



Heritage Interpretation Training Center.

Our new *Heritage Interpretation Training Center* offers 17 different college-level courses in heritage interpretation via our e-live training program. All courses award CEU credits and certificates of completion. Check out our interpretive course catalog:

http://www.heritageinterp.com/interpretive_training_center_course_catalogue.html



Prof. John Veverka - Certified Interpretive Planner/Trainer.

John Veverka & Associates
www.heritageinterp.com
jvainterp@aol.com

Serving Michigan museums and heritage sites from our base in Lansing, Michigan.

Welcome to Ann Arbor!

Congratulations on your 2015 MMA conference.
We invite you to visit our museums while you are here.



Established in 1857, the Washtenaw County Historical Society is dedicated to the collection, preservation and presentation of local history. The current exhibit at the Museum on Main Street is "Capturing the County – The Art & Business of Early Photographers".

The Argus Museum is dedicated to the products and people of the Argus Camera Company and displays rare and prototype cameras, unusual equipment and accessories, military devices, and employee memorabilia. The collection was recently donated to the WCHS and represents a significant part of Ann Arbor's history.

The Museum on Main Street

County life in a restored 1830s house

500 N. Main • 734-662-9092

Regular Hours

Saturday & Sunday, 12 Noon-4 PM

Special Conference Hours

September 30, 1-4 PM

The Argus Museum

Housed in the historic Argus 1 Building

525 W. William • 734-769-0770

Regular Hours

Monday-Friday, 9 AM-5 PM

Special Conference Hours

October 3, 11AM-3PM

WEB DESIGN FOR NON-PROFITS

boxcar studio



DOWNTOWN ANN ARBOR, MICHIGAN
BOXCARSTUDIO.COM • 734.786.3986



THE
Cooperstown
GRADUATE
PROGRAM

Training Creative Entrepreneurial Museum Leaders
Committed to Programs for the Public Good
www.cgp.oneonta.edu



MADE IN USA

30 AMERICANS

ONE NATION. THIRTY EXPERIENCES.

October 18—January 18 at the Detroit Institute of Arts. Tickets available at dia.org.



DETROIT INSTITUTE OF ARTS

This exhibition has been organized by the Rubell Family Collection, Miami. Funding for Free First Weekends has been provided for visitors by the Ford Foundation and the John S. and James L. Knight Foundation. Support for the exhibition has been provided by the Friends of African and African American Art. Additional support has been provided by DTE Energy, MGM Grand Detroit, Dickinson Wright, Richard and Jane Manoogian Foundation, Siebert Brandford Shank & Company, LLC, Reuben & Cheryl Munday, The Skillman Foundation, Lorna Thomas, M.D., P.C., Global Automotive Alliance, and other generous supporters. Image: *Baby I Am Ready Now* (detail), Mickalene Thomas, 2007, acrylic, rhinestone and enamel on wooden panel. Courtesy of Rubell Family Collection, Miami



Exhibit Planning • Conceptual Development • Exhibit Design • Graphic Design
Michigan Women's Hall of Fame • Nuwarine Exhibit

good@gooddesigngroup.com

www.gooddesigngroup.com



EXHIBITIONS | PEOPLE

Client-Centered Process > Audience-Centered Experience

We believe exhibitions are for people.

We engage with clients to develop focused exhibit experiences for their audiences using a flexible, collaborative process informed by our long and varied experience.



Hutchinson Studios llc, 21056 Robinwood St., Farmington, MI 48336 248-798-3788 hutchstudios.com larry@hutchstudios.com



The Michigan Historical Center is a proud member of the Michigan Museums Association and joins them in celebrating Michigan.

Check out michiganology.com for a variety of unique products featuring historical images from the Archives of Michigan. Proceeds benefit the educational programs at the Michigan Historical Center.

For wholesale inquiries, contact Cindy Hales at 517-335-2796 or cindy@michiganhistory.org.





UNION BUILDING
KEWEENAW NATIONAL HISTORICAL PARK
CALUMET, MICHIGAN

RESTORE RENEW TRANSFORM

Quinn Evans Architects collaborates with our clients to plan and design museum and visitor center facilities that balance diverse program objectives, including amenities, galleries, educational and event venues, archival and research spaces, and secure areas for special collections.



QUINN EVANS
ARCHITECTS

WWW.QUINNEVANS.COM



Providing creative solutions since 1991

OUR EXPERTISE IN ART & ARCHIVES MANAGEMENT INCLUDES:

- Inventory, cataloguing and photography of physical and digital assets
- Collections database implementation, management and user training
- Art and archives preservation
- Policy and procedure development
- Fine and decorative art consignment
- Exhibition planning, marketing and PR
- Liaising with art handlers, shippers, insurers and other outside parties
- Collections acquisition and de-accession planning
- Art conservation and security assessments
- Event planning and space design
- Internal communications initiatives
- ...and more!

Grand Rapids, Michigan

P: 616.459.4064

reaganmarketing.com

TOP-LEVEL ATTENTION, RESOURCES AND EXPERIENCE WITH A HEART TO MATCH

Nonprofit organizations need a professional services provider that has a heart for the niche. At UHY LLP, certified public accountants, we recognize that each nonprofit segment is unique. We understand your business model complexities and focus on its distinct characteristics to better serve each segment. With our national reputation and years of experience, we have the capabilities to serve nonprofit organizations with distinction. You have our undivided attention.



*The next
level of service*

DETROIT, MI
313 964 1040

FARMINGTON HILLS, MI
248 355 1040

STERLING HEIGHTS, MI
586 254 1040

www.uhy-us.com

An independent member of UHY International



Exhibits
at the
Hatcher
Graduate
Library

Curiouser and Curiouser: Exploring Wonderland with Alice

Thru December 17

Monday -Friday
10:00 am - 5:00 pm

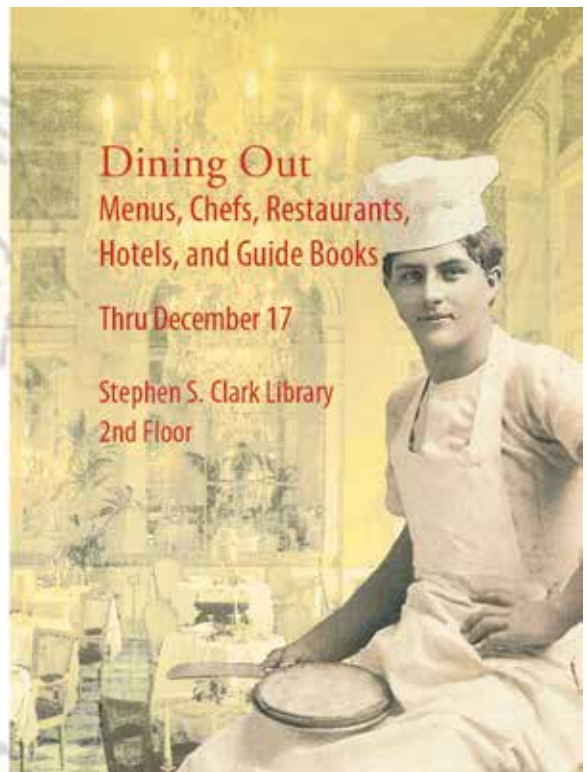
Special Collections
7th Floor



Dining Out Menus, Chefs, Restaurants, Hotels, and Guide Books

Thru December 17

Stephen S. Clark Library
2nd Floor



What We Do

- **Create** and **present** exhibitions at six venues
- **Manage** and **maintain** artwork on all GVSU campuses
- **Coordinate** events, programs, and outreach

Why We Do It

- To **shape** and **enrich** the lives of students, faculty, staff, visitors, and the community
- To **create** global learning experiences and interdisciplinary education opportunities

Resources

- Visit gvsu.edu/artgallery for more information and access to the entire art collection online
- Find us on:     

Explore. Discover. Share.

- **Explore** art by locations, subjects, or artists using the *Art at GVSU* app
- **Discover** new inspiration and learning opportunities
- **Share** your favorite works of art with friends

GVSU ART GALLERY Explore.
Discover.
Share.



GRAND VALLEY
STATE UNIVERSITY



(Detail) Olga Florenskaya, Russian Greeting Cards for the Health of Ladies, Silcockers, GVSU Collection 2006.541.1

MICHIGAN'S PREMIER MULTI-TAP

**72 DRAUGHT BEERS
(INCLUDING THREE HAND-PUMPED DRAFTS)**

**80 BOTTLES FROM BREWERIES AROUND THE
WORLD**

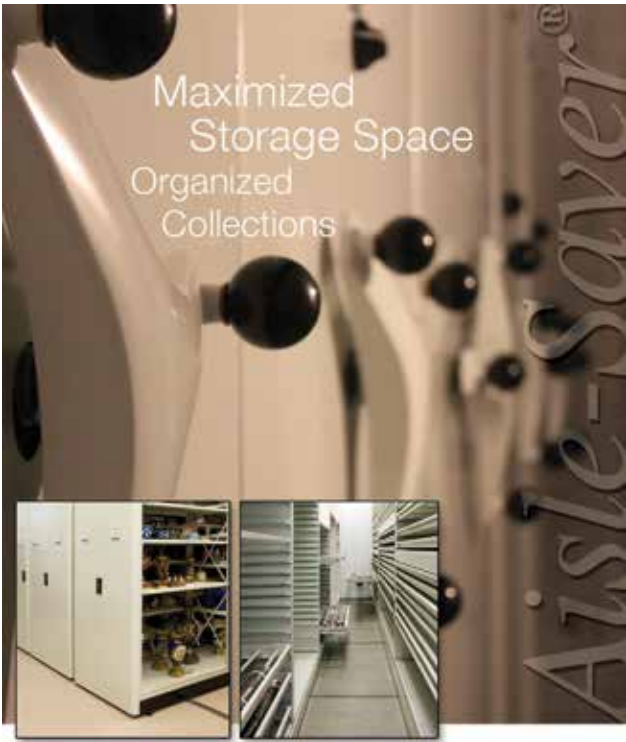
50+ SINGLE MALT SCOTCH WHISKIES

**AMERICAN PUB FARE FEATURING
SPECIALTY BURGERS, SALADS,
ENTREES, HAND-ROLLED PIZZAS, AND A VARIETY
OF SANDWICHES ON OUR HOMEMADE BREAD**

**HOURS OF OPERATION:
MONDAY-SATURDAY 11:30-2AM
SUN NOON-12AM**



338 S. STATE ST, ANN ARBOR, MI 734.996.9191 WWW.ASHLEYS.COM TWITTER: @A2ASHLEYS



TYLER SUPPLY COMPANY

Contact Us Today
krush@tylersupply.com
www.tylersupply.com | 800-356-7417



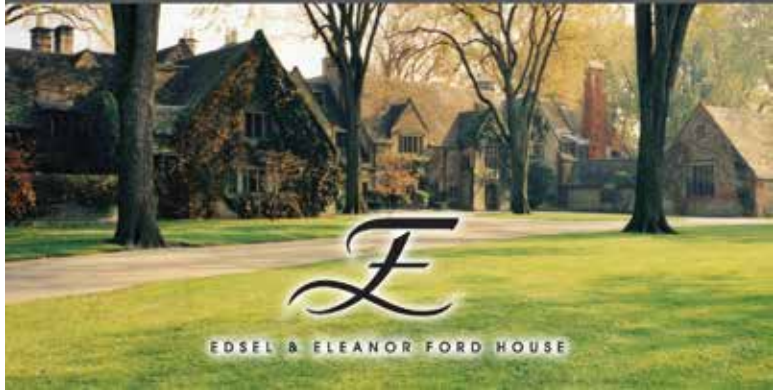
HENRY FORD
ESTATE
 FAIR LANE
 A National Historic Landmark

HENRY FORD ESTATE
 DEARBORN | WWW.HENRYFORDESTATE.ORG

THE
 HISTORIC
 FORD
 ESTATES

SPONSOR OF THE MORNING BREAK

EDSEL & ELEANOR FORD HOUSE
 GROSSE POINTE SHORES | WWW.FORDHOUSE.ORG



EDSEL & ELEANOR FORD HOUSE

FLUTTER & WOW MUSEUM PROJECTS

We research, design, and implement exhibition projects for museums, galleries, commercial and private clients



Valdez Museum and Historical Archive



Howell Nature Center



Detroit Institute of Arts

info@flutterwow.com • 210.364.6305
www.flutterwow.com

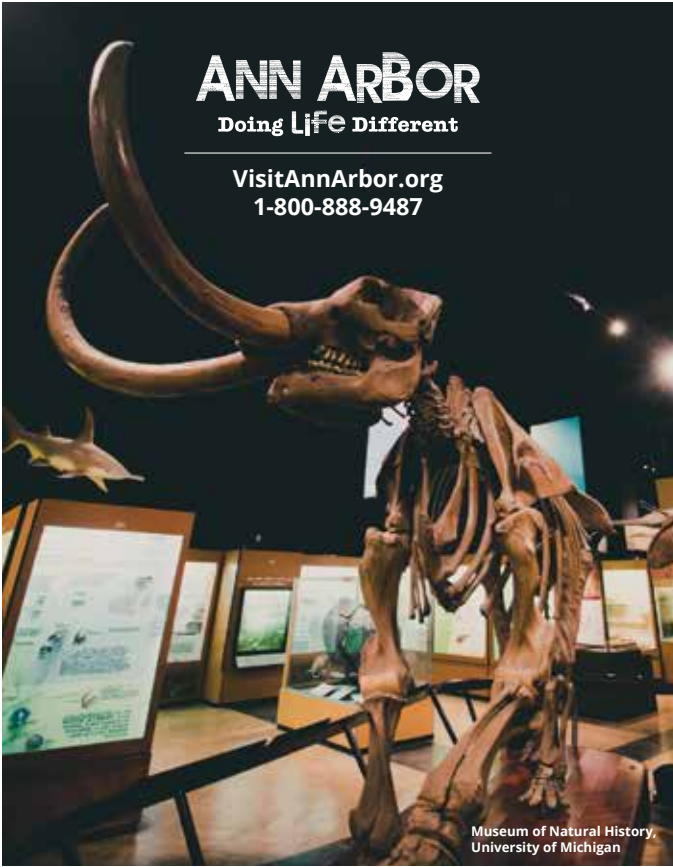


MARY KAY INGENTHON
 PRINCIPAL

8128 Swarner Drive
 Shawnee Mission, KS 66219

913/894-5359 voice
mkcomm@sbcglobal.net

institutional planning audience development fund raising



KEMPf HOUSE



The Kempf House Museum is a historic Greek Revival home dedicated to preserving and sharing Ann Arbor's musical, architectural and German-American heritage.

located on 312 S Division St, Ann Arbor, MI 48104
Sunday Fall Tours begin September 27th
Wednesday Noon Lectures start September 30th
734-994-4898 www.kempfhousmuseum.org

Gene Ullery-Smith Graphic Design

Specializing in the design of
exhibits and wayfinding solutions



www.ullerysmith.com

PRESERVING MEMORIES TRANSFORMING EXHIBITS

Grand Rapids Public Museum Installations



Innovative Graphic Solutions



TIMOTHY J. CHESTER

Consulting Services for Museums & Cultural Organizations

371 Sunset Ave., N.W. • Grand Rapids, Michigan 49504-4954
616.340.6299
timothyjchester.com
tim@timothyjchester.com

MUSYNERGY

can help your museum to...

ENVISION a strategic plan that unites current realities with a sustainable future

DEVELOP an interpretive plan that shapes every aspect of the visitor experience

INCORPORATE audience evaluation to become a more visitor-centered institution

BUILD board capacities by tailoring best practices to your museum's leadership

Michigan clients include:

- American Museum of Magic
- Copper Country Trail National Byway
- Detroit Institute of Arts
- Frederik Meijer Gardens and Sculpture Park
- Grand Rapids Art Museum
- Holland Historical Trust
- Lakeshore Museum Center
- Newaygo County Museum
- University of Michigan Museum of Natural History

www.MusynergyConsulting.com

616-846-0478 Daryl@MusynergyConsulting.com

Zing TRAIN

teaching organizations
all over the country
HOW TO GET TO THE NEXT LEVEL



Go to our website to check out who we are,
how we think, and what we can offer you.
There's a ton of free samples too!

www.zingtrain.com

[METAL ARMATURE HOLDERS]

[LINEN WRAPPED RISERS]

[MALE CONSERVATION HEADFORM]



GAYLORD | ARCHIVAL[®]

Preserve Today. Share Tomorrow.

As the details unfold...
We have all the finishing touches for your exhibition at
GAYLORD.COM/DisplayAccessories

CALL: **1-800-448-6160** | WEB: GAYLORD.COM


[ACRYLIC RISER]

[ACRYLIC COLUMNS]

[NUMBER BLOCKS]

[INSECT PINS]

[DOLL STANDS]



**FROM CONCEPT
TO COMPLETED PROJECTS**

Balancing the four critical project elements of
scope, schedule, quality and budget

- ~ OWNER REPRESENTATIVE
- ~ PROGRAM MANAGEMENT
- ~ CONTRACTS MANAGEMENT
- ~ FACILITIES AND EXHIBITS

the **KANE GROUP, Inc.**
Kevin J. Kane, AIA

616.402.2399
kanegroup@aol.com

National Marine Sanctuaries
National Oceanic & Atmospheric Administration
THUNDER BAY NATIONAL MARINE SANCTUARY
The Great Lakes Maritime Heritage Center




OPEN ALL YEAR!
Check our online calendar for seasonal hours

EXCITING EXHIBITS
Explore the *Shipwreck Century* and experience the maritime history, shipwrecks, and archaeology of the Great Lakes.

Diving ■ Snorkeling ■ Kayaking ■ Glass Bottom Boat

FREE ADMISSION
Great Lakes Maritime Heritage Center
500 West Fletcher Street, Alpena, MI 49707
Please call 989.356.8805 for more information
thunderbay.noaa.gov

VISIT UMMA!

PREMIER UNIVERSITY ART MUSEUM

IN THE CULTURAL HEART OF ANN ARBOR

มหาวิทยาลัย
UNIVERSITY OF MICHIGAN
MUSEUM OF ART

525 SOUTH STATE STREET
ANN ARBOR, MI 48109-1354
UMMA.UMICH.EDU
FREE ADMISSION

Visit the UMMA Store in the Maxine and Stuart Frankel and the Frankel Family Wing.



HISTORIC

Places that

NEVER

Get

OLD



www.mackinacparks.com

Learn more about MMA!
Subscribe to the e-Newsletter
Visit MichiganMuseums.org
Follow us on [Facebook.com/MichiganMuseums](https://www.facebook.com/MichiganMuseums)

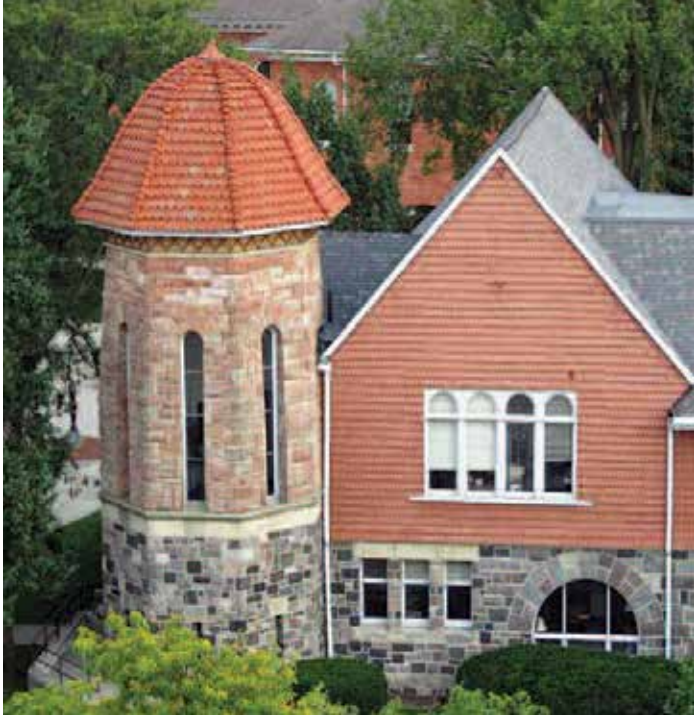
#MiMuseums



Join the conversation.

The Department of Geography and Geology

Historic Preservation Program



EMU's Masters of Historic Preservation program is now the largest and one of the most comprehensive in the country. We offer evening classes in northern Michigan.

.....
Graduate Classes in:

- Museum Practice Studies
- Heritage Interpretation, Tourism, and Administration
- Preservation Planning
- Materials Conservation
- Digital Cultural Heritage
- Graduate Certificate in Historic Preservation
- Undergraduate Minor in Historic Preservation

.....
Program Advisers:

Director

Preservation Planning, Certificate and Northern Michigan Program

Dr. Ted Ligibel

235 Strong Hall; 734 487-0232

tligibel@emich.edu

Digital Cultural Heritage

Professor Dan Bonenberger

118F Strong Hall; 734 487-8750

dbonenbe@emich.edu

Museums Studies, Heritage Interpretation and Administration

Professor Nancy Villa Bryk

229 Strong Hall; 734 417-4024

nbryk@emich.edu

For more detailed information, go to our website:
emich.edu/geo/preservation

EASTERN
MICHIGAN UNIVERSITY
Education First



126 South Monroe Street
Monroe, Michigan 48161

734.240.7780

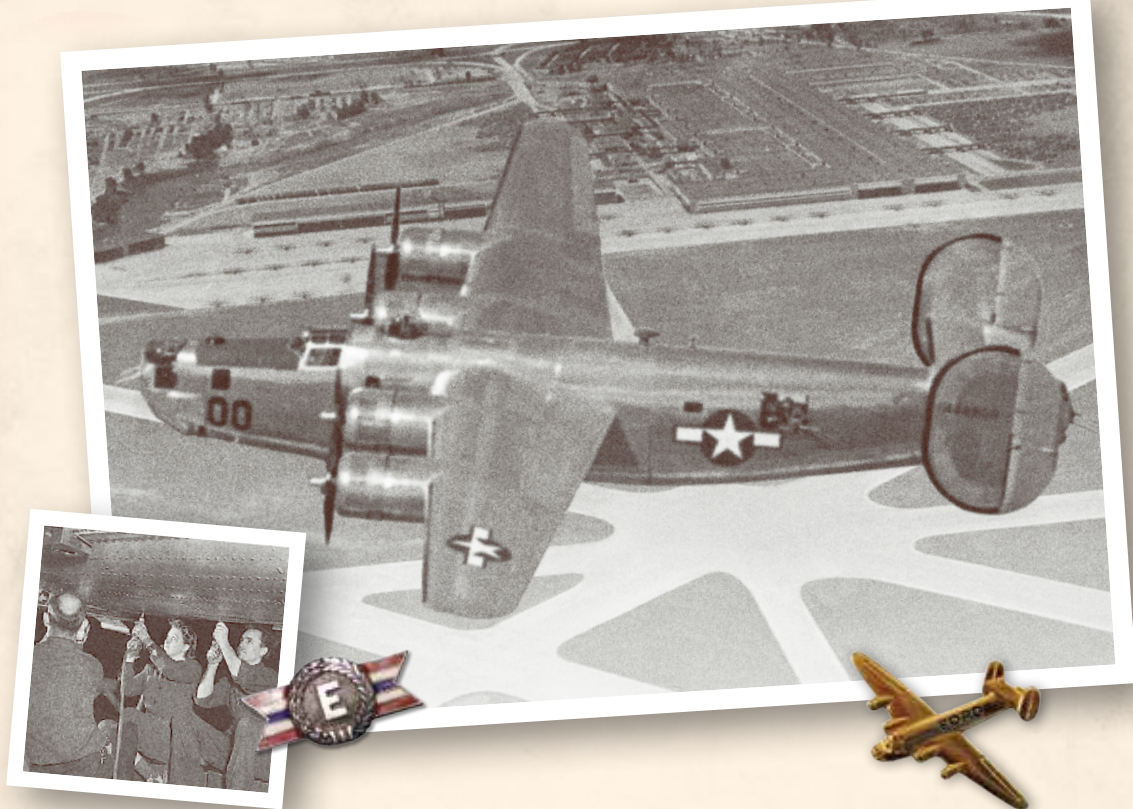
MonroeCountyMuseum.com
[Facebook.com/MonroeMuseums](https://www.facebook.com/MonroeMuseums)

My predictions for Museums in 2025:

Use this page to tell us what you think will change in museum organizations 10 years from now in 2025. Then, tear out this page and turn it in to the conference registration desk.



VICTORY STARTED HERE.



FREE AMERICAN MEN AND WOMEN of all races, classes, religions and regions came together at the Willow Run Bomber Plant near Detroit to save the frightened people of a desperate world from those who would enslave them.

WILLOW RUN IS HALLOWED GROUND. It is the place where an extraordinary group of ordinary Americans built 8,685 B-24 "Liberator" Bombers. It serves as a testament to the commitment, innovation and capacity for change of the American people. And, with the help of generous donors across our country, a small part of historic Willow Run has been saved.

THE QUESTION NOW IS THIS: Can we raise enough money to convert the saved part of the Plant into an exciting new museum? A museum that will not just tell the story of Willow Run and the "Arsenal of Democracy," but will also inspire young people to pursue education and career opportunities in the scientific, engineering and technical fields needed to keep America strong and safe in the decades to come.



YOU HOLD THE ANSWER to that question. With your support, together, "We Can Do It... Again!" To help, learn more and contribute, visit www.savethebomberplant.org.



HELP US TODAY!

FUTURE
NEW HOME
of the
YANKEE AIR
MUSEUM

WWW.SAVE THE BOMBERPLANT.ORG/HELP

Home of the original "Rosie the Riveter"

